

Lincolnshire's Community Mental Health Transformation Programme for Adults and Older Adults

Sarah Connery, Chief Executive LPFT

Nick Harwood, Associate Director Adult Community Division



The backstory

- The **NHS Long Term Plan** and **NHS Mental Health Implementation Plan** set the ambition to transform the provision of community mental health care and to develop new and integrated models of primary and community mental health care.
- **Lincolnshire** was carefully selected as one of 12 **early implementer sites to lead transformation** of community mental health services in England in partnership with PCN, CCG, local authorities, the VCSE, service users, families, carers and local communities themselves.
- We were successful in securing **further funding to rollout countywide** and our findings will be used to inform the roll out of new models of integrated primary and community care at a national level.



The overview

- Integrated Place Based Teams
- Population health led, integrated delivery model supported by a large Cultural Change Programme
- Multi-agency and cross sector collaboration to realise collective impact at local level
- Investment in community assets, through co-production with local people to develop local support networks
- Up-skilling, training and coaching of local people and clinicians to improve quality of care for people living with SMI
- Co-production of a volunteer & peer support network including people with lived experience
- Continued development of the 'digital' offer
- A commitment to deliver SMI physical health checks
- Dedicated focused services
- Increase time and capacity for our specialist staff

Together we will improve mental health and wellbeing through thriving, connected communities.

#Right care, right place, right time

The 3 Plates Theory

Fluid Accessible Shared Risk MDT Led Trauma Informed Formulation Based

Community & VCSE

Community Facing
Strength Based Assets

Person Led
Holistic
Accessible & Flexible
Preventative

PCN & IPBTs

Localised Support for less
complex MH needs

Person Led
Holistic
Preventative

Dedicated Focus LPFT Specialist Services

Dedicated, Time Limited Treatment

Provider Led
Using MH Expertise/SMI
Planning for discharge on admission
Proactive

Page 188

Person

VCSE

PCN/ARRs

IPBTs

CMHTs

PACT

Com.
Rehab

Eating
Disorders

Inpatient
& Specialist
Services

Integrated Model promoting Self Efficacy

What's in place now?



We have rolled out 4 of proposed 9 Integrated Place Based Teams

Psychology Recruitment Campaign put together



Developing local solutions to enable better system access

Expansion of new roles and new ways of working

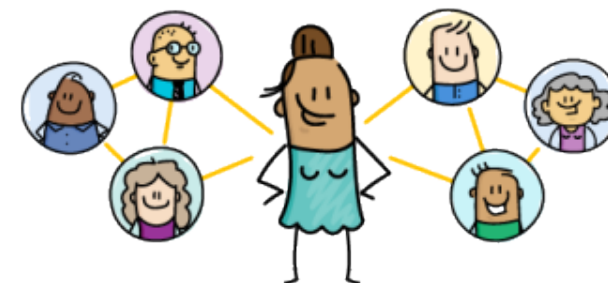
Blueprint pathway in place being localised with IPBTs

Specialist clinical pharmacists role in place enabling proactive meds management

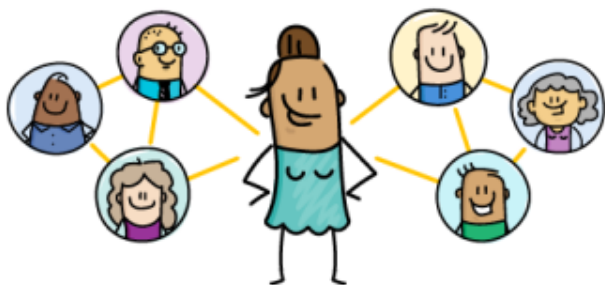
Dedicated workstreams established

People with lived experience are working with us across the programme

Aligning with the local authority to link together digital technologies and ensure a collaborative approach



What's in place now?



Co-locating staff in community hubs, such as Bridge Central, Lincoln

Established a clear plan for the transformation of the eating disorders service

Lincolnshire Mental Health Helpline / Advisers helpline in place to support our communities



Rolling out the Community rehab team across the county

It's All About People website launched for the workforce



Expansion of crisis cafes



Trialling Vitrucare platform and digital kiosks installed

Establishing and expanding the Personality and Complex Trauma (PACT) Team



What is underway?

Working with Primary Care to embed MH practitioners in each GP Practice (ARRS)

A two phased stakeholder engagement programme for LPFT staff (*Conversations about Transformation*) and wider stakeholders (*Connect to Communities*)

Community Assets Development (CAD) – working together to determine the local mental health offer

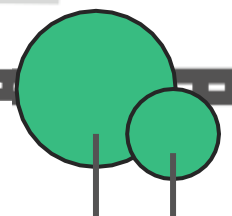
We've implemented testing models which need to transition into implementing based on population health – to be constantly tested and evaluated

Putting in VCSE roles, peer support workers, community connectors, social prescribers/link workers

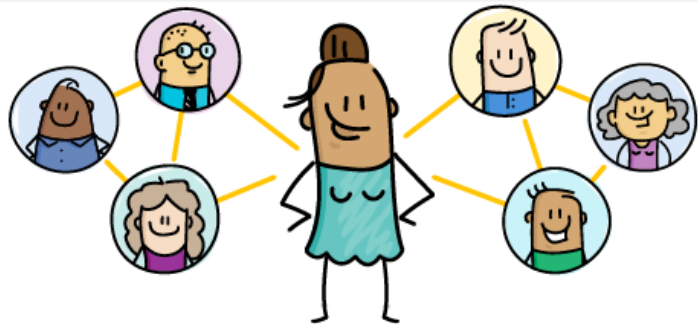
Moving forward we need to engage with the public to destigmatise mental health, change the way they think and change behaviour

Embedding large cultural change package working with Primary Care led neighbourhoods to support people to realise new ways of working

Working together with Public Health, CCG, colleagues to lead out innovative Lincolnshire MH and Wellbeing Training offer



What's to come?



Clear and meaningful data collection and reporting processes in place

Establishing an information and data sharing agreement in place between GP Practices, LPFT and key wider partners

Achieve the physical health check target for people with SMI

Supporting the VCSE sector to develop and grow through investment, support and training.

Rollout of 15 Integrated Place Based Teams across the county

Care Programme Approach Review

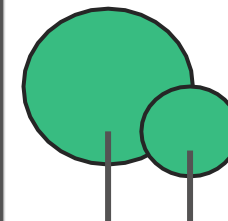
Connected Community events to continue the Conversation about Transformation

Expansion of co-production to further enhance how we work with people with lived experience and carers

Dedicated comms and engagement resource in place to ensure clear messaging and involvement of all people

Ensuring everyone has a personalised care plan

It's All About People website to become public facing



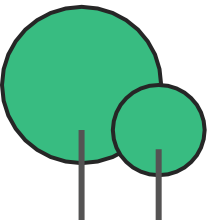
What will be...



- countywide **night-life cafes** and community connections
- **fluid pathways** for people to access mental health services
- an **integrated digital offer** to support face to face engagement
- continuous and **active dialogue** about mental health
- ongoing training and upskilling of communities to enable **thriving communities**
- reduction in mental health prescribing and more comprehensive offer of psychological therapies
- ensuring everyone will have a '**What matters to me?**' plan
- Move to 4 week waiting times for adult and older adult community mental health teams in line with the Clinically-led Review of NHS Access Standards

By 2024..

- we will have **15 Integrated Place Based Teams** working in Primary Care led neighbourhoods
- we will have an **increased investment up to £1 million** into the VCSE sector potentially enabling opportunities within local communities for up to 50,000 people
- the transformation programme should have **200 additional new roles** in place across Lincolnshire
- **6,000 people** will have been supported by Integrated Place Based Teams



This page is intentionally left blank